

900 自动运模车

AUTOMATIC MOLD SEWING MACHINE

零件手册

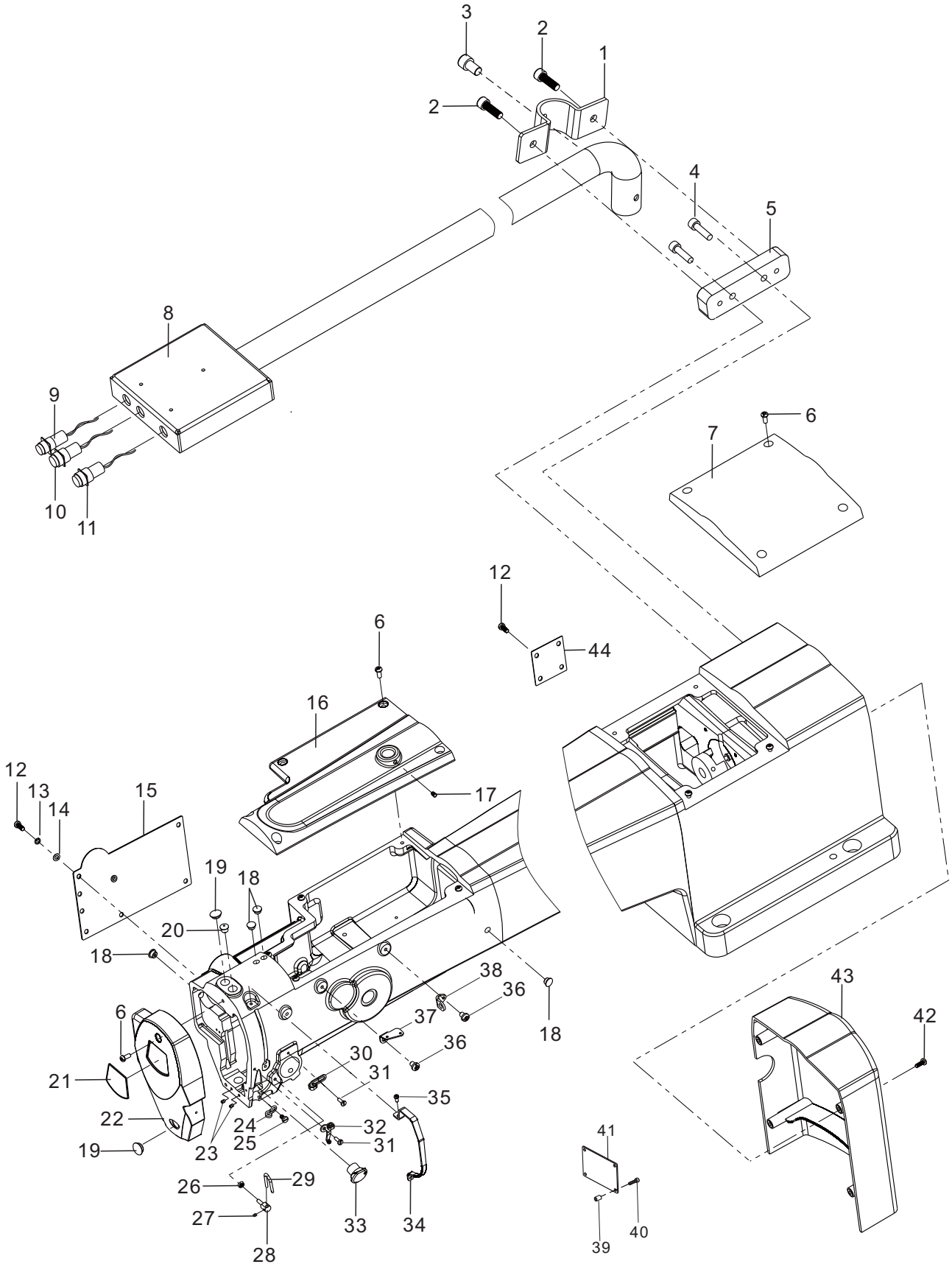
**PARTS BOOK**

# 目 录

## CONTENTS

1. 机头、外装部件.....	1
FRAME & MISCELLANEOUS COVER COMPONENTS	
2. 上轴、针杆部件.....	3
MAIN SHAFT & NEEDLE BAR COMPONENTS	
3. 中压脚部件.....	5
PRESSER MECHANISM & PRESSER VARIABLE COMPONENTS (1)	
4. 辅助压脚部件.....	7
AUXILIARY PRESSER MECHANISM & MARKER PEN COMPONENTS	
5. 松线部件.....	9
TENSION RELEASE & THREAD TENSION COMPONENTS	
6. 下轴剪线部件.....	11
LOWER SHAFT TRIM THREAD COMPONENTS	
7. 润滑部件.....	14
LUBRICATION COMPONENTS	
8. X-Y送料部件(1).....	16
FEEDING COMPONENTS (1)	
9. X-Y送料部件(2).....	18
FEEDING COMPONENTS (2)	
10. X-Y送料部件(3).....	20
FEEDING COMPONENTS (3)	
11. 气动部件.....	22
PNEUMATIC COMPONENTS	
12. 大缝台部件.....	24
BIG SEWING BED COMPONENTS	
13. 机架部件.....	26
MACHINE STAND COMPONENTS	
14. 附件部件.....	28
ACCESSORIES COMPONENTS	
15. 激光部件(1).....	30
WIPER MECHANISM COMPONENTS (1)	
16. 激光部件(2).....	32
WIPER MECHANISM COMPONENTS (2)	

# 1. 机头、外装部件

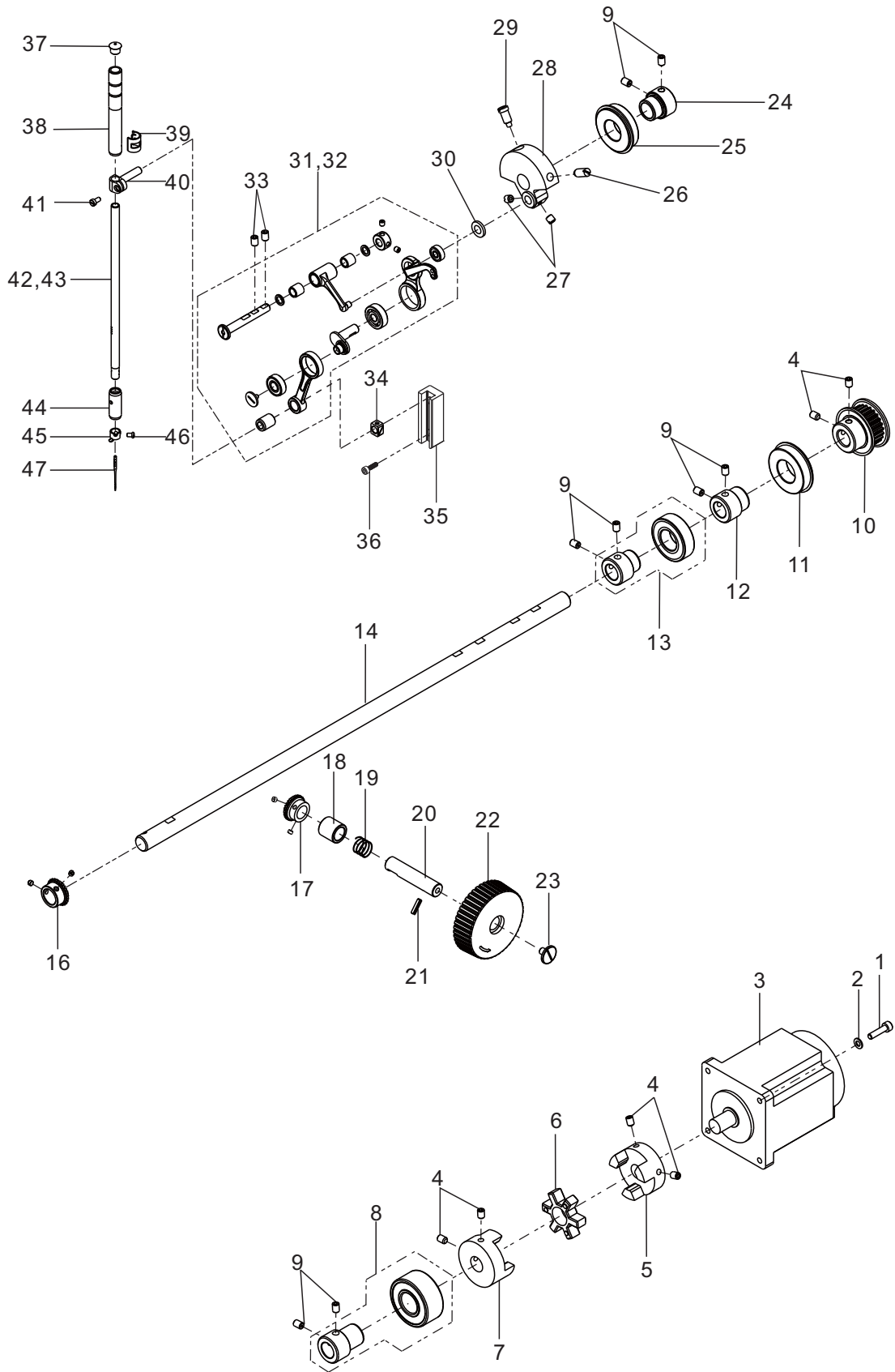


## 机头、外装部件

## FRAME &amp; MISCELLANEOUS COVER COMPONENTS

序号 NO.	件号 Part No.	名称	DESCRIPTION	数量 Qty
1	10053727	固定座夹	CALMP	1
2	10003093	螺钉 M8 L=20	SCREW M8 L=20	2
3	10002232	螺钉 M8 L=14	SCREW M8 L=14	1
4	10003142	螺钉 M8 L=25	SCREW M8 L=25	2
5	20019686	固定座	FIXED BASE	1
6	10008776	螺钉 M5 L=12	SCREW M5 L=12	11
7	20019785	900机壳上后盖喷漆件	TOP COVER REAR	1
8	20019787	900操作盒安装座组件喷漆件	MOUNTING BASE	1
9	10039125	压框开关-黄色	PRESS FOOT FRAME SWITCH (YELLOW)	1
10	10037725	启动开关(绿色)	STARTING SWITCH (GREEN)	1
11	10028708	急停开关	STOP SWITCH (RED)	1
12	10005350	螺钉 M4 L=8	SCREW M4 L=8	9
13	10009503	4垫圈 (GB/T 859-1987)	WASHER 4	5
14	10002954	4垫圈	WASHER 4	5
15	20013334	运模车后盖板	LEFTWARD COVER	1
16	20019786	900机壳上前盖喷漆件	TOP COVER FRONT	1
17	10011232	螺钉 M6 L=6	SCREW M6 L=6	1
18	10000090	摆动架销油塞	RUBBER PLUG	4
19	10011099	橡胶塞	RUBBER PLUG	2
20	10010587	橡胶塞	RUBBER PLUG	1
21	10005468	面板装饰牌	FACE PLATE	1
22	20012639	运模机面板	FACE COVER	1
23	10000563	螺钉 M4 L=5	SCREW M4 L=5	2
24	10011139	下线钩	ARM THREAD GUIDE DOWN	1
25	10010668	螺钉 SM11/64"×4 0	SCREW SM11/64"×40	1
26	10009471	螺母 M4	NUT M4	1
27	10051477	线钩座螺钉 M3.5 L=3	SCREW M3.5 L=3	1
28	10049613	线钩座	ARM THREAD GUIDE FIXED BASE	1
29	10049614	线钩	ARM THREAD GUIDE	1
30	10008940	右线钩	ARM THREAD GUIDE RIGHT	1
31	10009691	螺钉 SM9/64"×4 0 L=10	SCREW SM9/64"×40 L=10	2
32	10055858	750左线钩	ARM THREAD GUIDE LEFT	1
33	10054891	小电子夹线器组件	ELECTRONIC THREAD CLAMP DEVICE	1
34	20014983	750挑线杆防护罩	THREAD TAKE-UP LEVER COVER	1
35	10011143	螺钉 SM9/64"×4 0	SCREW SM9/64"×40	2
36	10011158	螺钉 SM15/64"×2 8	SCREW SM15/64"×28	2
37	10011200	上过线板	ARM THREAD GUIDE UP	1
38	10011145	单眼过线板	SINGLE-HOLE THREAD EYELET GUIDE	1
39	10024992	转接板支柱	SUPPORT PILLAR	4
40	10009103	螺钉 M4×6	SCREW M4 L=16	4
41		机头转接板	SIGNAL SWITCH BOARD	1
42	10003049	螺钉 M4 L=12	SCREW M4 L=12	4
43	20020205	760机壳后罩喷漆件	BACK COVER	1
44	20024229	侧窗盖板		1

## 2. 上轴、针杆部件



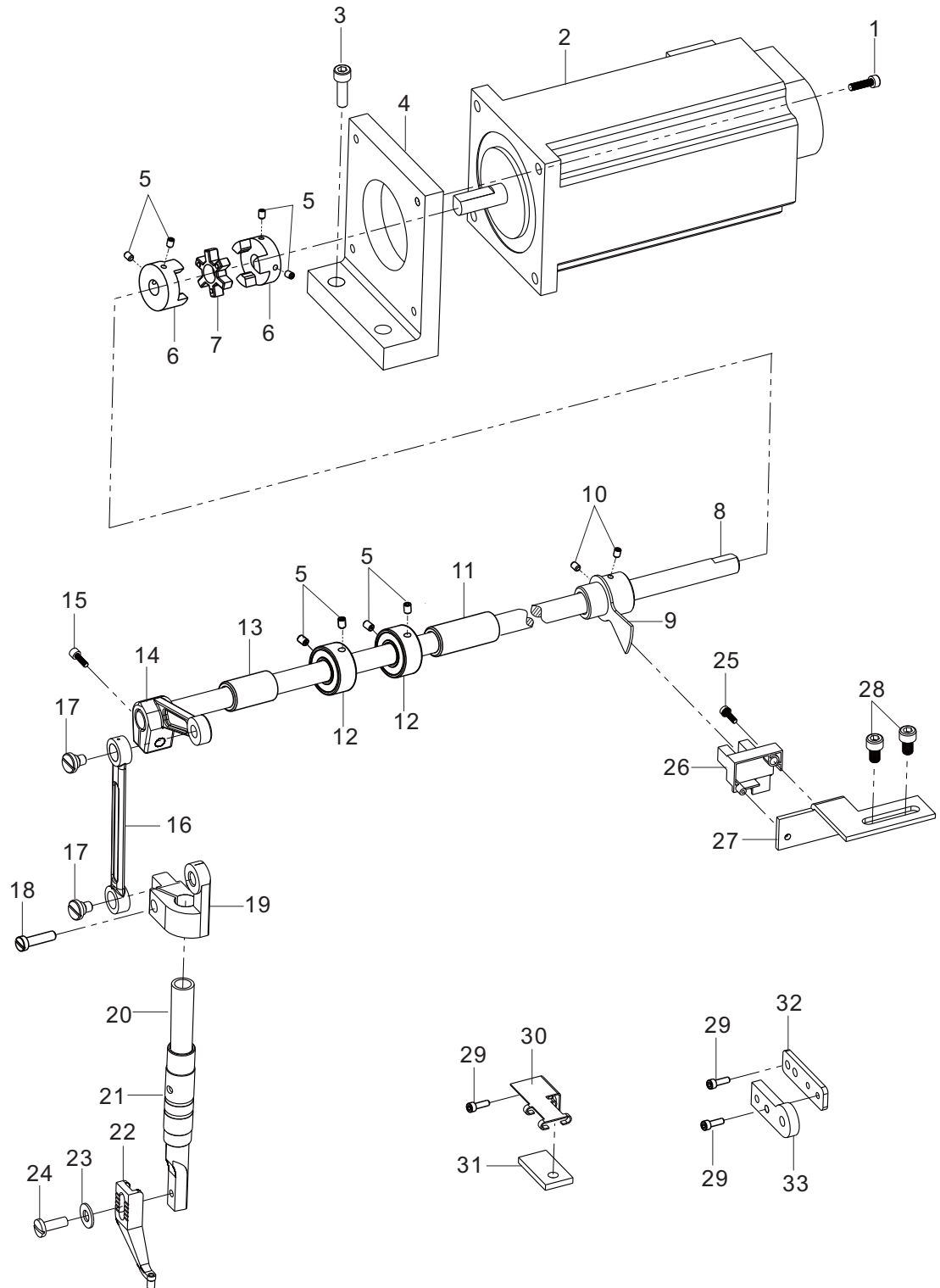
## 上轴、针杆部件

## MAIN SHAFT &amp; NEEDLE BAR COMPONENTS

序号 NO.	件号 Part No.	名称	DESCRIPTION	数量 Qty
1	10001943	螺钉 M5 L=20	SCREW M5 L=20	4
2	10000260	垫圈5.2×9.8×1	WASHER 5.2×9.8×1	4
3		主轴电机	MAIN SHAFT SERVO MOTOR	1
4	10009187	螺钉 M6 L=8	SCREW M6 L=8	6
5	10012615	联轴器(1)	COUPLING (1)	1
6	10011227	联轴器橡胶块	COUPLING RUBBER	1
7	10012613	联轴器(2)	COUPLING (2)	1
8	10029408	轴承 6022VVNR	BEARING 6022VVNR	1
9	10010678	螺钉 SM15/64"×28 L=8	SCREW SM15/64"×28 L=8	6
10	10049904	上轴同步齿形带轮组件	UPPER SHAFT TENSION PULLEY ASM	1
11	10050517	轴承 6004ZZ	BEARING 6004ZZ	1
12	10014362	轴承衬套	BEARING_BUSH	1
13	10014280	轴承衬套	BEARING_BUSH	1
14	10054059	900上轴	MAIN SHAFT 900	1
15				
16	10027407	齿轮 B	GEAR_B	1
17	10021312	齿轮 A	GEAR_A	1
18	10027277	轴套	NEEDLE FEED SHAFT METAL	1
19	10011242	弹簧	SPRING	1
20	10027278	手轮轴	HANDWHEEL SHAFT	1
21	10006073	销	SPRING PIN	1
22	10011603	手轮	HANDWHEEL	1
23	10011225	螺钉 M6	HANDWHEEL SETSCREW M6	1
24	10042095	轴承衬套	BEARING_BUSH	1
25	10025882	轴承 6004NR-2RS_BOM	BEARING 6004NR-2RS	1
26	10010082	螺钉 SM9/32"×2 8 L=16	SCREW SM9/32"×2 8 L=16	1
27	10005020	螺钉 SM1/4"×40 L=6	SCREW SM1/4"×40 L=6	2
28	10012607	针杆曲柄	COUNTER WEIGHT	1
29	10010545	螺钉 SM9/32"×2 8 L=15	SCREW SM9/32"×2 8 L=15	1
30	10011622	垫圈 8×5×0.7	WASHER 8×5×0.7	1
31	10038440	挑线杆组件 <用于-01>	THREAD_TAKE_UP_COMPL	1
32	10049935	双行程挑线杆组件2 <用于-02>	THREAD_TAKE_UP_COMPL	1
33	10009109	螺钉 M4 L=6	SCREW M4 L=6	2
34	10011194	针杆连接轴滑块	SLIDE BLOCK	1
35	10037240	针杆滑块槽	NEEDLE BAR METAL GREASE COVER	1
36	10050541	螺钉 SM3/16"×2 8 L=12	SCREW SM3/16"×2 8 L=12	2
37	10010587	橡胶塞	RUBBER PLUG	1
38	10049875	针杆上轴套	NEEDLE_BAR_METAL	1
39	10031678	挡油片	NEEDLE_BAR_METAL_GREASE_COVER	1
40	10038438	针杆连接柱	NEEDLE BAR CONNECTING	1
41	10030286	螺钉	SCREW	1
42	10040641	针杆	NEEDLE BAR	1
43	10040642	针杆	NEEDLE BAR	1
44	10046043	针杆下轴套	NEEDLE_BAR_LOWER_METAL	1
45	10000237	针杆线钩	THREAD GUIDE	1
46	10041770	螺钉 SM1/8"×4 L=4.5	SCREW SM1/8"×4 L=4.5	1
47	10053820	机针 DP×5 10#	NEEDLE DP×5 10#	1
48	10049763	油毡弹簧	SPRING	1
49	10049764	针杆油毡	OIL FELT PAD	1

-01小旋梭 -02大旋梭

### 3. 中压脚部件



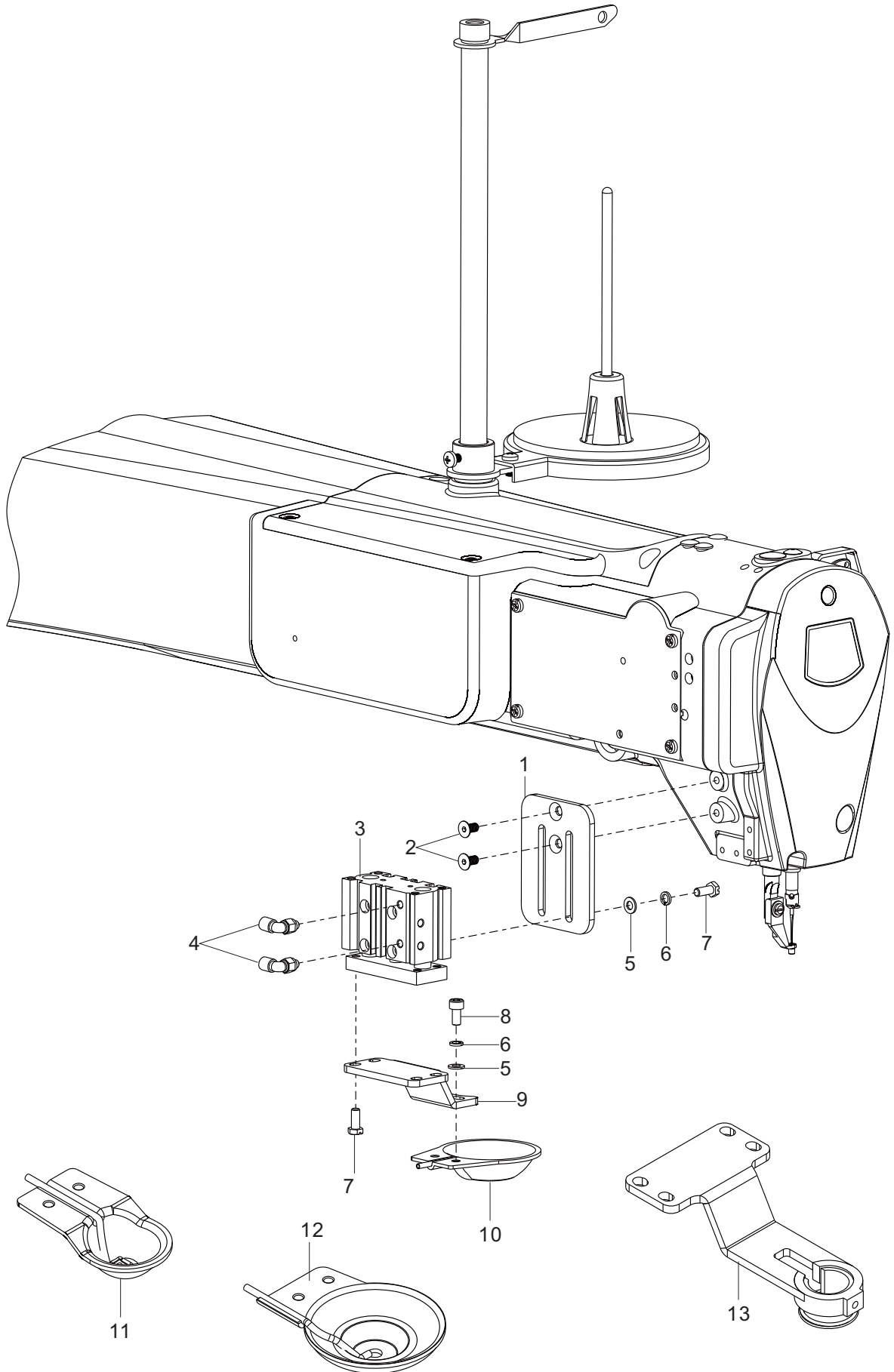
## 中压脚部件

## LOWER SHAFT TRIM THREAD COMPONENTS

序号 NO.	件号 Part No.	名称	DESCRIPTION	数量 Qty
1	10009103	螺钉 M4 L=16	SCREW M4 L=16	4
2	10061929	中压脚步进电机	STEPPING MOTOR	1
3	10002028	螺钉 M6 L=20	SCREW M6 L=20	1
4	10027319	电机座	MOTOR BRACKET	1
5	10012014	螺钉 M5 L=4	SCREW M5 L=4	8
6	10027317	联轴器	COUPLING	2
7	10056286	联轴器橡胶圈	COUPLING RUBBER RING	1
8	10057543	驱动轴	DRIVE SHAFT	1
9	10027334	电机传感片组件	SEVSING PIECE	1
10	10011232	螺钉	SCREW M6 L=6	2
11	10055042	轴套	AXLE SLEEVE	1
12	10027320	挡圈	RETAINING RING	2
13	10048177	轴套	AXLE SLEEVE	1
14	10057545	曲柄	CRANK	1
15	10011410	螺钉 M5 L=10	SCREW M5 L=10	1
16	10057544	连杆	CONNECTING ROD	1
17	10057547	轴位螺钉	AXIAL SCREW	2
18	10000380	螺钉 SM11/64"×40	SCREW SM11/64"×40	1
19	10057541	压杆导架	PRESSURE BAR GUIDE	1
20	10057542	压杆	PRESS ROD	1
21	10057548	压杆下套	PRESS ROD	1
22	10057415	中压脚	MEDIUM PRESSURE FOOT	1
23	10011680	垫圈 4.6×9.7×0.8	WASHER 4.6×9.7×0.8	1
24	10010650	螺钉 SM9/64"×40	SCREW SM9/64"×40	1
25	10000984	螺钉 M3 L=9.5	SCREW M3 L=9.5	1
26	10051271	槽型光耦	GROOVE OPTOCOUPLER	1
27	10057539	传感器安装板	MOUNTING PLATE	1
28	10001239	螺钉组件	SCREW M4 L=8	2
29	10001513	螺钉组件	SCREW M3 L=6	4
30	10058963	油毡安装板	MOUNTING PLATE	1
31	10058965	油毡	LINOLEUM	1
32	10058966	油毡1	LINOLEUM	1
33	10058964	油毡安装板	MOUNTING PLATE	1



#### 4. 辅助压脚部件

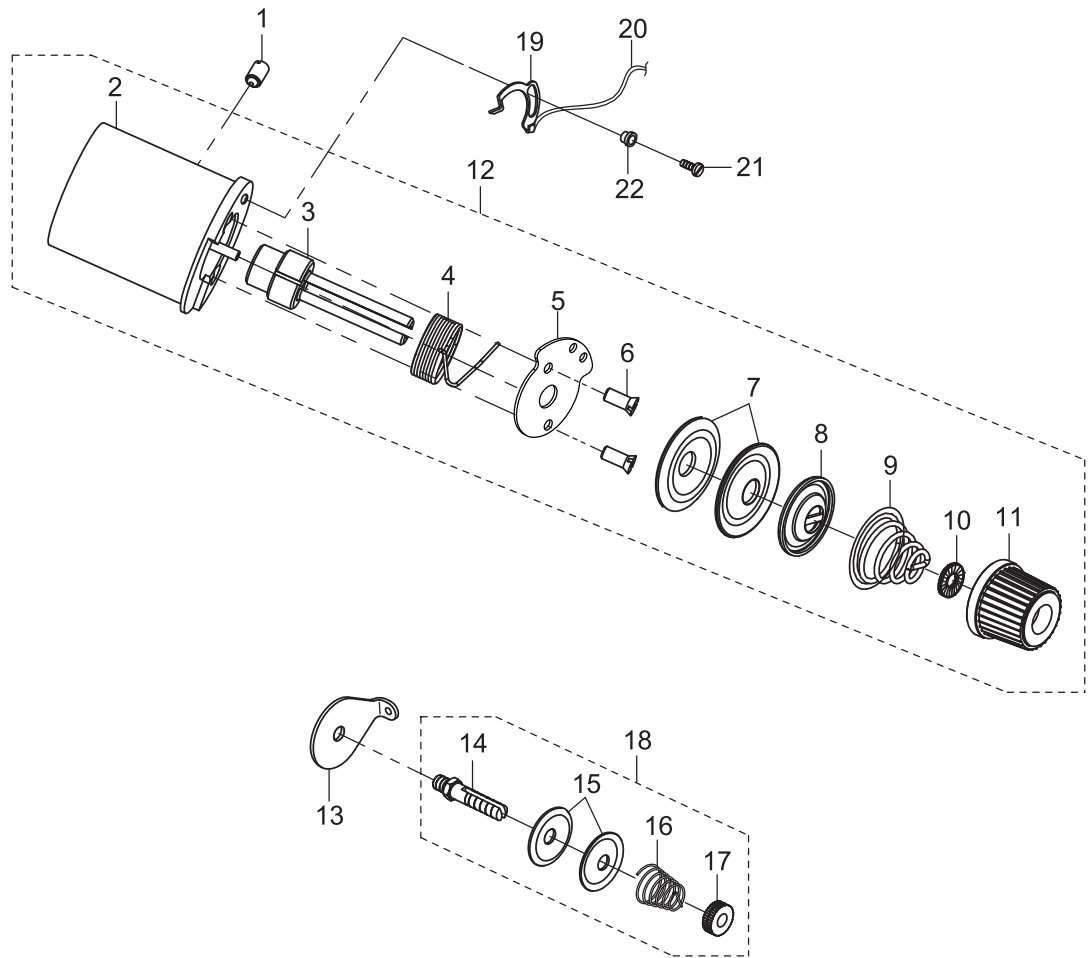


辅助压脚部件

AUXILIARY PRESSER MECHANISM COMPONENTS

序号 NO.	件号 Part No.	名称	DESCRIPTION	数量 Qty
1	10055187	辅助压脚气缸固定板	CYLINDER PLATE	1
2	10057345	螺钉	SCREW	2
3	10039466	辅助压脚气缸	CYLINDER	1
4	10052378	气管接头	TIE-IN	2
5	10005537	5垫圈	SPRING WASHER 5	6
6	10012318	5垫圈	WASHER 5	6
7	10013883	螺钉 M5 L=12	SCREW M5 L=12	8
8	10057345	螺钉 M5 L=10	SCREW M5 L=10	2
9	10055186	辅助压脚连接板3	CYLINDER PLATE	1
10	10054986	辅助压脚组件	AUXILIARY PRESSER FOOT	1
11	10057340	小辅助压脚	AUXILIARY PRESSER FOOT	1
12	10059101	盘形辅助压脚	AUXILIARY PRESSER FOOT	1
13		弹簧辅助压脚	AUXILIARY PRESSER FOOT	1
	10059092	安装板	MOUNTING PLATE	1
	10059093	活动底座	MOVABLE BASE	1
	10059263	弹簧	SPRING	1

# 5. 松线部件

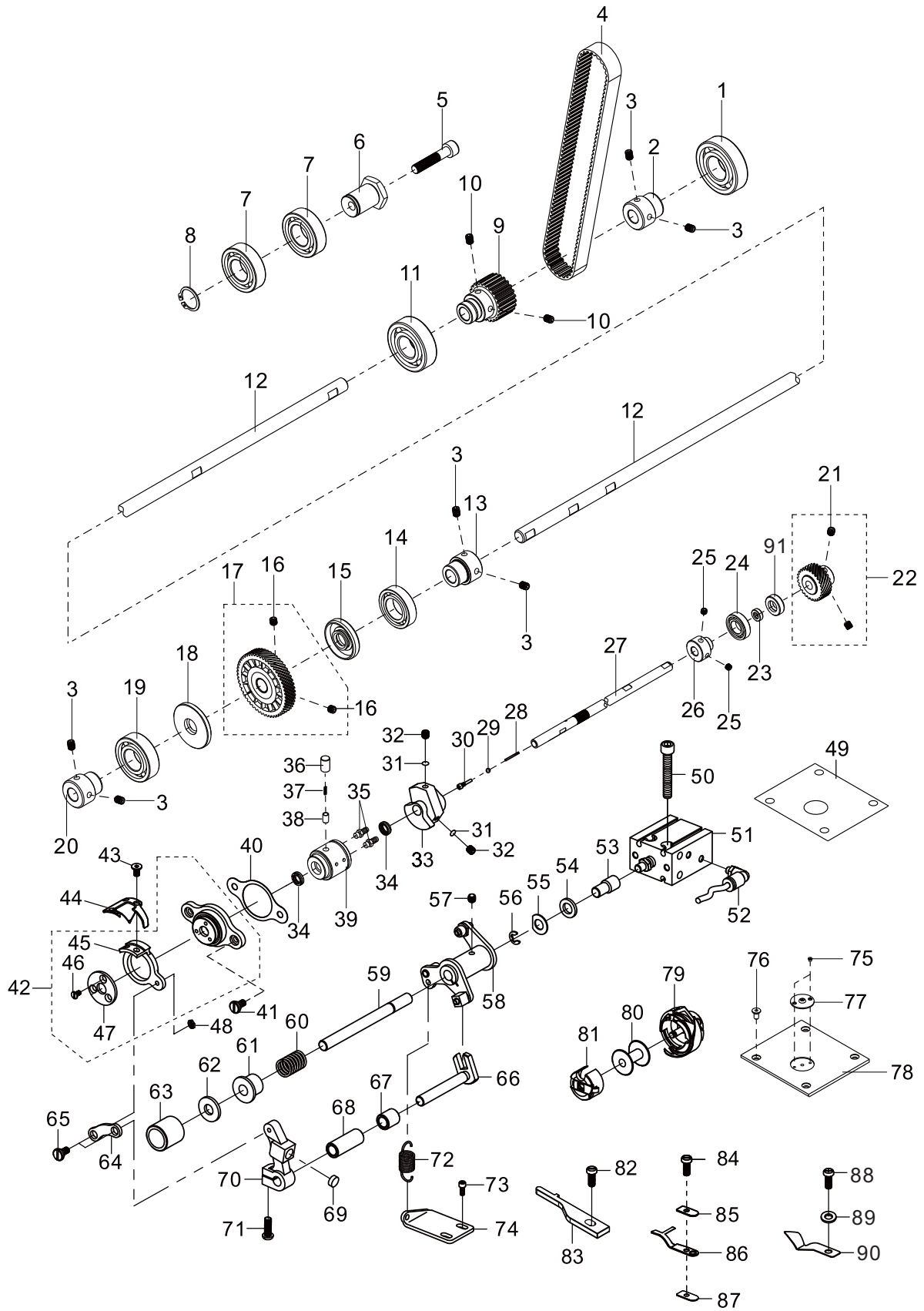


## 松线部件

## TENSION RELEASE &amp; THREAD TENSION COMPONENTS

序号 NO.	件号 Part No.	名称	DESCRIPTION	数量 Qty
1	10039435	螺钉	SCREW	1
2	10054295	全密封电磁铁	THREAD TENSION ELECTROMAGNET	1
3	10037581	夹线螺钉	SCREW	1
4	10049905	运模机挑线弹簧	SPRING	1
5	10049376	锁紧块	LOCK PLATE	1
6	10012730	螺钉	SCREW	2
7	10005489	过线板	THREAD TENSION DISK	2
8	10004625	松线板	THREAD TENSION DISK PRESSER	1
9	10004626	弹簧	SPRING	1
10	10004633	夹线制动板	ROTATING STOPPER	1
11	10004783	夹线螺母组件	THREAD TENSION NUT	1
12	20019806	夹线器组件	THREAD TENSION ASM	1
13	10000541	夹线器过线器	THREAD GUIDE	1
14	10004666	螺钉 SM15/64"×28	SCREW SM15/64"×28	(1)
15	10004393	夹线板	THREAD_TENSION_DISK	(2)
16	10004669	弹簧	SPRING	(1)
17	10004664	螺母 SM1/4"×40	SCREW SM1/4"×40	(1)
18	10011493	夹线组件	THREAD_TENSION_1_ASM	1
19	10049374	感应片	SENSOR CABLE	1
20	10002471	单芯电线	WIRE	1250
21	10002917	螺钉 M2.5 L=6	SCREW M2.5 L=6	2
22	10050978	传感片外绝缘片	BUSHING	1

# 6. 下轴及剪线部件(1)



## 下轴及剪线部件

## PRESSER MECHANISM &amp; PRESSER VARIABLE COMPONENTS

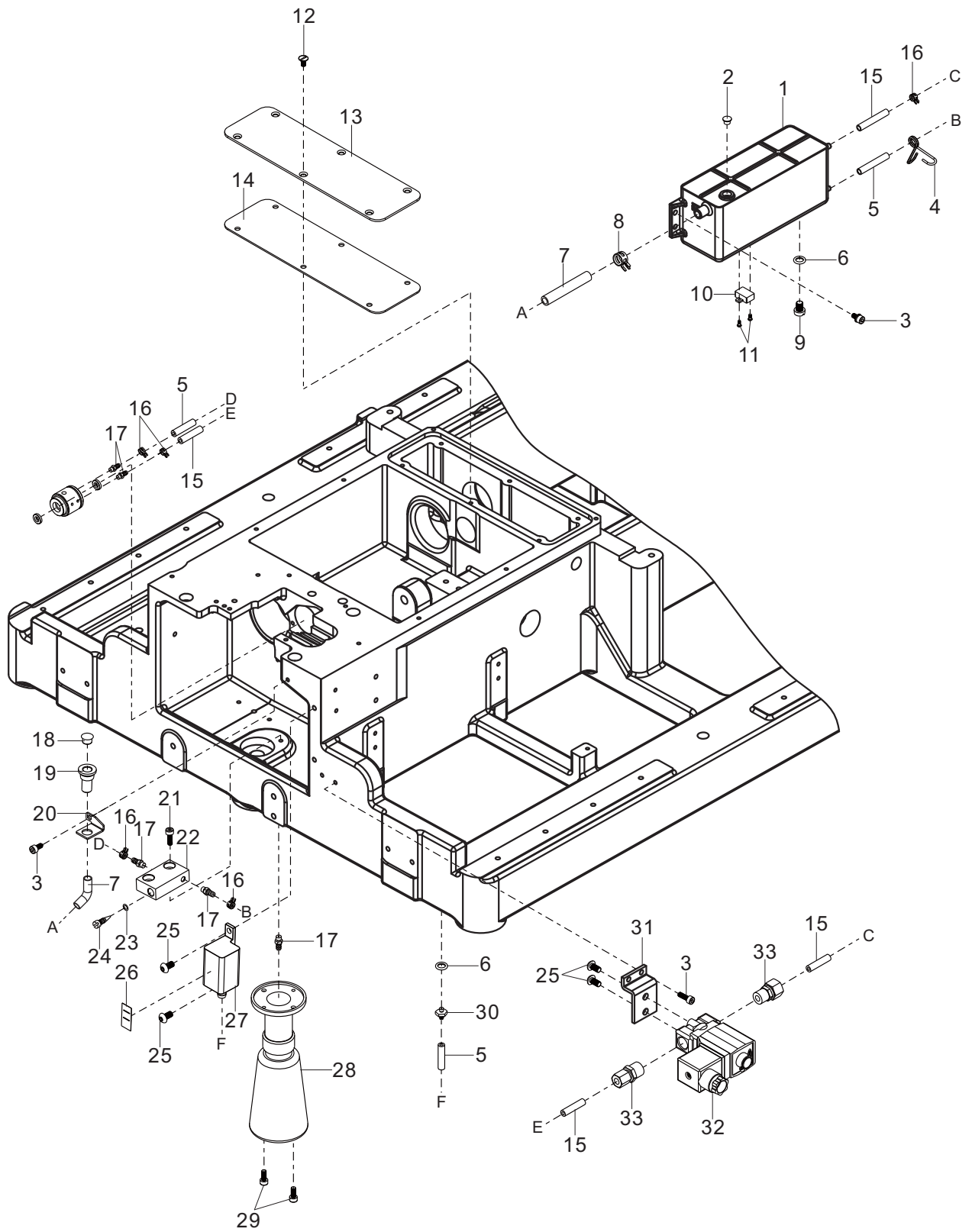
序号 NO.	件号 Part No.	名称	DESCRIPTION	数量 Qty
1	10054088	轴承62/22ZZ	BEARING 62/22ZZ	1
2	10040825	轴承衬套	BEARING SUPPORT	1
3	10010678	SM15/64"×2 8螺钉	SCREW SM15/64"×2 8	6
4	10037786	上轴同步带	TIMING BELT	1
	10037787	上轴同步带	TIMING BELT	1
	10037788	上轴同步带	TIMING BELT	1
	10052388	上轴同步带	TIMING BELT	1
	10054280	上轴同步带	TIMING BELT	1
5	10002020	M8×40 螺钉	SCREW M8 L=10	1
6	10027837	张紧轮套	TENSION PULLEY	1
7	10050517	6004ZZ_BOM轴承	BEARING 6004ZZ_BOM	2
8	10007916	20挡圈	RING 20	1
9	10051566	抬牙轴同步齿形带轮	LOWER SPROCKET	1
10	10009187	M6×8 螺钉	SCREW M6 L=8	2
11	10025881	6204NR-2RS_BOM轴承	BEARING 6204NR-2RS	1
12	10054008	900带轮轴	SHAFT 900	1
13	10037694	轴承衬套	BEARING SUPPORT	1
14	10037722	轴承6904ZZNR	BEARING 6904ZZNR	1
15	10012533	油封	OIL SEAL	1
16	10008862	SM1/4"×40 螺钉	SCREW SM1/4"×40	2
17	10023911	齿轮	GEAR	1
18	10012538	油封	OIL SEAL	1
19	10025882	轴承 6004NR-2RS_BOM	BEARING 6004NR-2RS	1
20	10037694	轴承衬套	BEARING SUPPORT	1
21	10008862	SM1/4"×40 螺钉	SCREW SM1/4"×40	2
22	10023912	齿轮	GEAR	1
23	10012423	油封	OIL SEAL	1
24	10026221	6901-ZZ BOM轴承	BEARING 6901-ZZ	1
25	10012014	M5×4 螺钉	SCREW M5 L=4	2
26	10049842	下轴后轴承挡圈	RING	1
27	10040498	下轴	SHAFT	1
28	10010063	油芯	OIL WICK	1
29	10000457	旋梭限油螺钉O形圈	O-RING	1
30	10010064	SM3/16"×32 螺钉	SCREW SM3/16"×32	1
31	10023739	剪线凸轮垫	THREAD TRIMMER CAM WASHER	2
32	10013465	螺钉 SM1/4"×40	SCREW SM1/4"×40	2
33	10010736	剪线凸轮	THREAD TRIMMER CAM	1
34	10013029	油封	OIL SEAL	2
35	10008779	油管接头	JOINT	2
36	10054194	螺钉 M8×4	SCREW M8×4	1
37	10014386	柱塞簧	PLUNGER SPRING	1
38	10012609	柱塞	PLUNGER	1
39	10054060	900下轴前套	FRONT BUSHING	1
40	10051729	750动刀架座垫片	KNIFE BRACKET MOUNTING BASE GASKET	2
41	10011794	螺钉 M4 L=10	SCREW M4 L=10	2
42	10059306	动刀架座组件	KNIFE BRACKET MOUNTING BASE	1
43	10011588	螺钉 SM11/64"×40	SCREW SM11/64"×40	2
44	10026782	动刀	ROUND KNIFE	1
45	10040497	动刀架	ROUND KNIFE BRACKET	1

## 下轴及剪线部件

## PRESSER MECHANISM &amp; PRESSER VARIABLE COMPONENTS

序号 NO.	件号 Part No.	名称	DESCRIPTION	数量 Qty
46	10009626	螺钉 M3 L=4.35	SCREW M3 L=4.35	3
47	10013026	刀架压板	KNIFE HOLDER	1
48	10009471	螺母	NUT	1
49	10053055	方形针板贴膜	SQUARE NEEDLE PLATE	1
50	10009520	螺钉 M5 L=25	SCREW M5 L=25	2
51	10037705	剪线气缸	AIR CYLINDER	1
52	10052378	气管接头	HOSE ELBOW	2
53	10037640	剪线气缸接头	CYLINDER KNUCKLE	1
54	10011650	垫圈 8.2×15×2	WASHER 8.2×15×2	1
55	10014124	垫圈 8.4×15×3	WASHER 8.4×15×3	1
56	10009654	挡圈 6	E-RING 6	1
57	10008862	螺钉 SM1/4" ×4 0	SCREW SM1/4" ×4 0	1
58	10039207	切线凸轮曲柄组件	TRIMMING CAM CRANK ASM	1
59	10011697	切刀驱动轴	TRIMMING SHAFT	1
60	10008812	弹簧	SPRING	1
61	10014196	扭簧端盖	SPRING COVER	2
62	10013008	垫圈 8.2	WASHER 8.2	1
63	10014462	轴套	BUSHING	1
64	10013044	刀轴连杆	KNIFE SHAFT CONNECTING BAR	1
65	10026142	螺钉	SCREW	2
66	10013007	切线驱动曲柄轴	TRIMMING CRANK SHAFT	1
67	10040501	轴套	BUSHING	1
68	10054299	轴套	BUSHING	1
69	10013010	切线驱动曲柄止动块	CRANK BLOCK	1
70	10013013	切线驱动曲柄	TRIMMING CRANK	1
71	10009818	螺钉 SM3/16" ×32	SCREW SM3/16" ×32	1
72	10028226	弹簧	SPRING	1
73	10005350	螺钉 M4 L=8	SCREW M4 L=8	2
74	10038523	剪线拉簧板	FIXED PLATE	1
75	10053634	螺钉	SCREW	2
76	10040655	螺钉	SCREW	4
77	10038528	运模车小针板	SMALL NEEDLE PLATE	1
78	10048793	750针板	NEEDLE PLATE	1
79	10041772	HSM-B1HTR旋梭	HOOK	1
80	10039875	梭芯	BOBBIN	1
81	10039877	BC-DBM(1)-NBL1梭壳	BOBBIN CASE	1
82	10010373	螺钉 SM11/64" ×4 0	SCREW SM11/64" ×4 0	1
83	10041951	旋梭定位钩	BOBBIN CASE HOLDER	1
84	10009601	螺钉 SM9/64" ×40	SCREW SM9/64" ×40	1
85	10055264	定刀压板	FIXED KNIFE PLATE	1
86	10011421	定刀	FIXED KNIFE	1
87	10042100	定刀垫片	FIXED KNIFE GASKET	1
88	10046203	定刀座螺钉	FIXED KNIFE SCREW	1
89	10057346	分线器垫片	DISPART THREAN SHUTTLE GASKET	1
90	10026784	分线器	DISPART THREAN SHUTTLE	1
91	10012678	轴套	BUSHING	1

# 7. 润滑部件



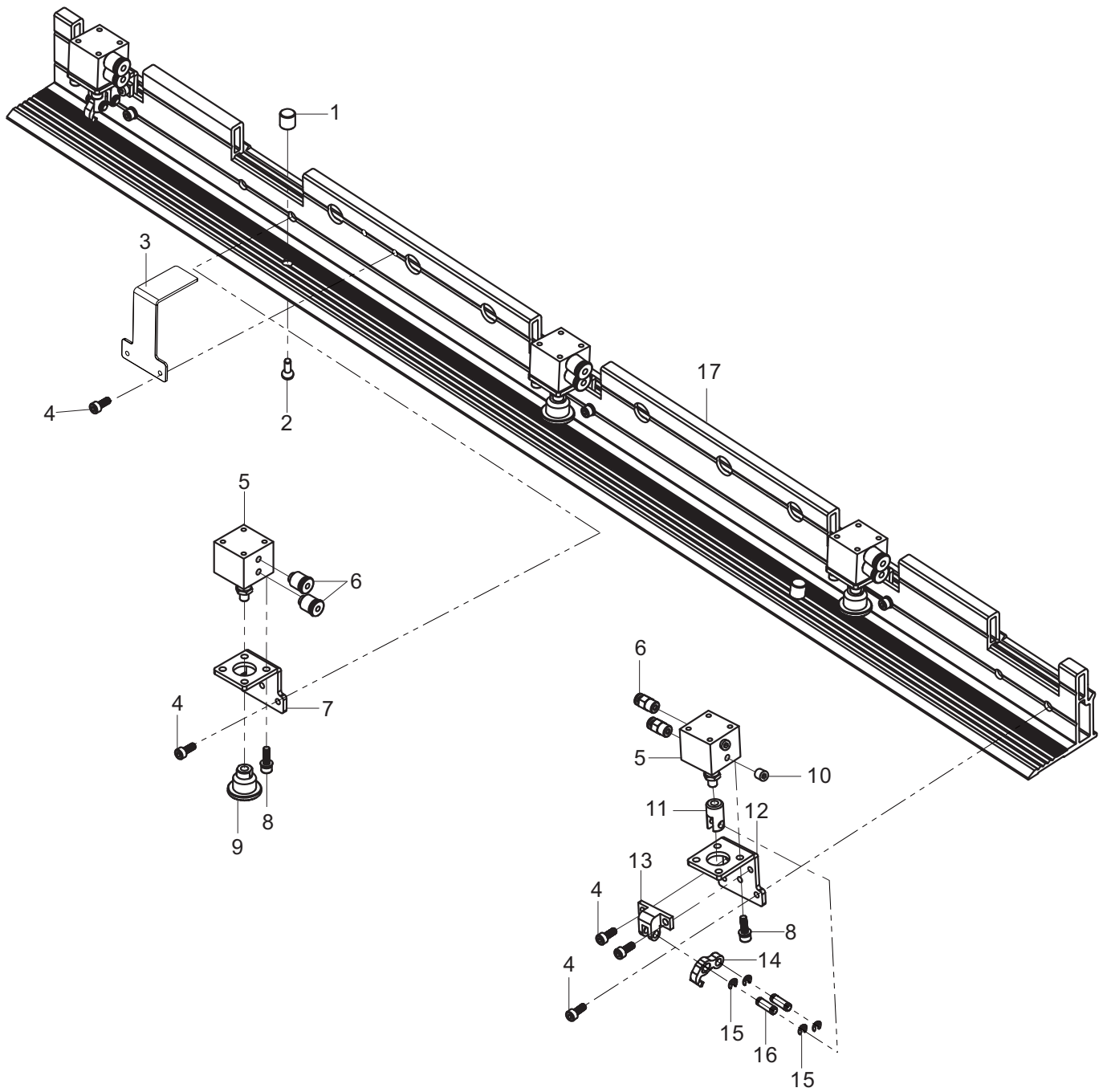


润滑部件

LUBRICATION COMPONENTS

序号 NO.	件号 Part No.	名称	DESCRIPTION	数量 Qty
1	10057439	油箱组件	OIL TANK	1
2	10010587	橡胶塞	RUBBER PLUG	1
3	10005350	螺钉 M4 L=8	SCREW M4 L=8	7
4	10022469	油管夹	SPRING CLIP	1
5	10007800	φ3×φ5油管	OIL TUBE φ3×φ5	1,500
6	10014461	6.5×20 形圈	O-RING	2
7	10007806	φ8×φ10油管	OIL TUBE φ8×φ10	200
8	10013048	弹簧	SPRING	1
9	10008783	SM5/16"×24 螺钉	SCREW SM5/16"×24	2
10	10054296	油量报警开关组件	SWITCH	1
11	10053851	PA1.6×6 螺钉	SCREW	2
12	10009195	M4×7.80 螺钉	SCREW M4 L=7.8	6
13	10037679	齿轮箱盖板	COVER PLATE	1
14	10038525	齿轮箱盖板垫	PLATE	1
15	10007796	φ4×φ6油管	OIL TUBE φ4×φ6	650
16	10012160	弹簧	SPRING	2
17	10008779	油管接头	JOINT	5
18	10010587	橡胶塞	RUBBER PLUG	1
19	10008780	加油杯	OIL FILLER CUP	1
20	10054049	小油杯架	BRACKET	1
21	10000863	M4×2 螺钉	SCREW M4 L=12	1
22	10010517	油量调节阀	OIL REGULATING VALVE	1
23	10000567	油量调节阀O形圈	O-RING	1
24	10000566	油量调节杆	REGULATING ROD	1
25	10007096	M5×10 螺钉	SCREW M5 L=10	4
26	10048826	油位标贴	OIL LEVEL LABEL	1
27	10005291	小油箱组件	SMALL OIL TANK	1
28	10006185	油杯组件	OILCAN ASM	1
29	10005041	M4×10 内六角圆头螺栓	SCREW M4 L=10	2
30	10048780	油管接头	JOINT	1
31	10055081	流量电磁阀安装座	MOUNTING PLATE	1
32	10042039	2KW03-08电磁阀	SOLENOID VALVE	1
33	10050200	锁母直通终端	JOINT	1

# 8. X-Y送料部件(1)

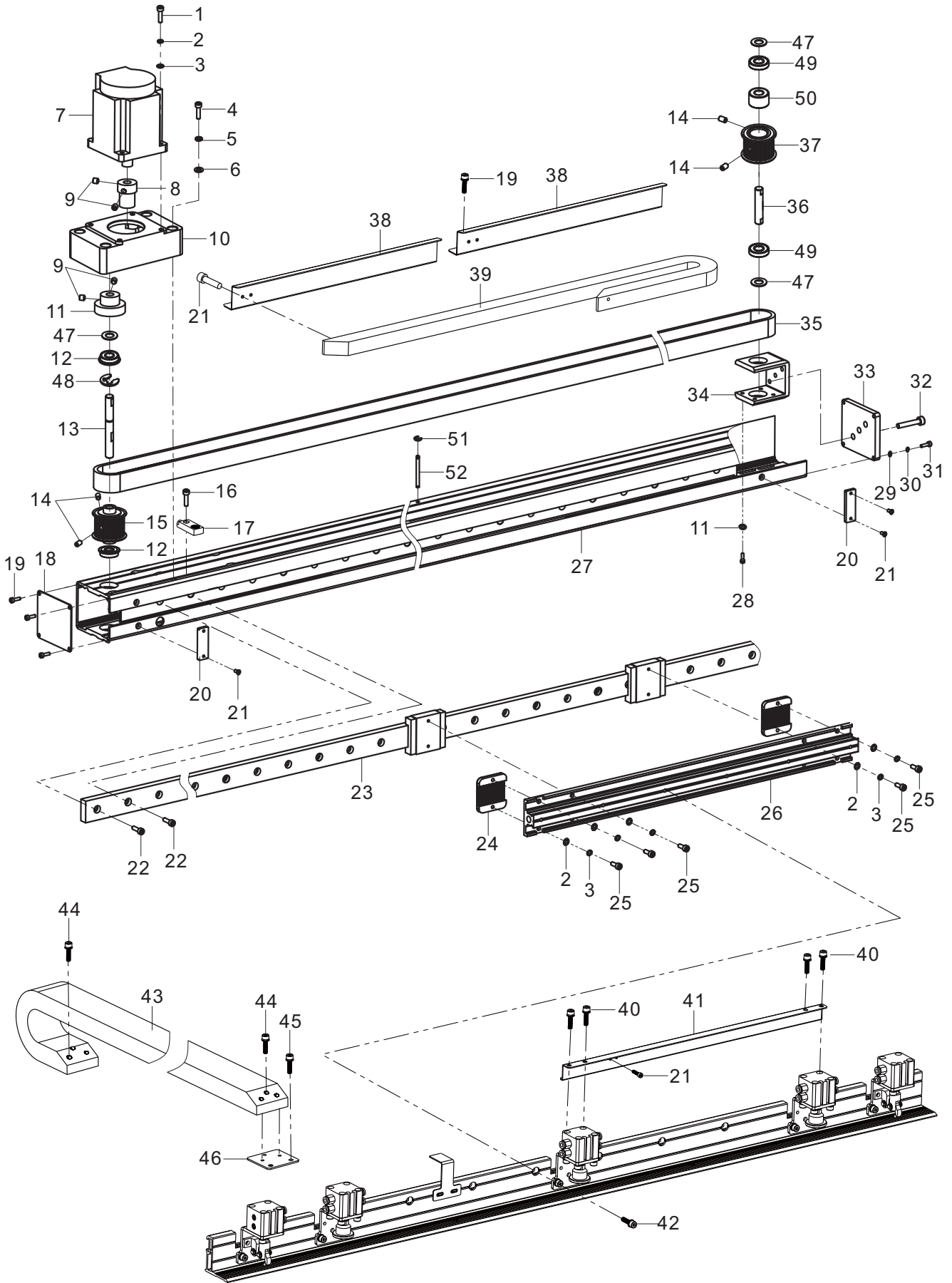


## X-Y送料部件 (1)

## FEEDING COMPONENTS

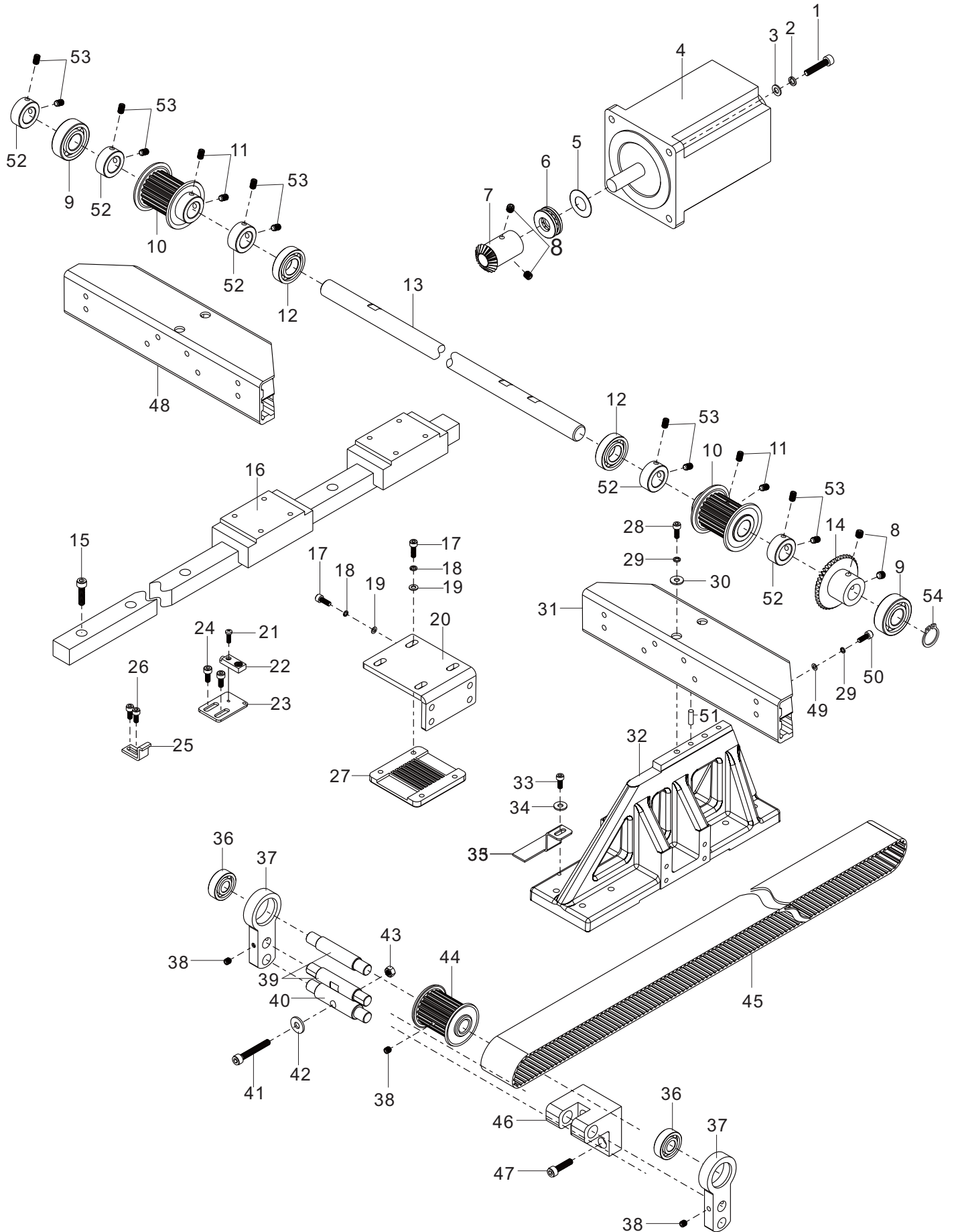
序号 NO.	件号 Part No.	名称	DESCRIPTION	数量 Qty
1	10052200	销	SPRING PIN	2
2	10040655	螺钉	SCREW M4 L=5.5	2
3	10061648	X向传感器感应片	X SENSOR MOUNTING	1
4	10001239	螺钉组件	SCREW M4 L=8	18
5	10060548	气缸	AIR CYLINDER	5
6	10061374	接头_PC04-M5C	JOINT	16
7	10054455	安装板A	MOUNTING PLATE A	3
8	10059054	螺钉组件	SCREW M4 L=16	20
9	10054452	压紧套B	PRESSING BLOCK	3
10	10012162	螺钉	SCREW M5 L=5	4
11	10054451	气缸接头	JOINT	2
12	10054456	安装板B	MOUNTING PLATE B	2
13	10054453	铰接座	HINGE SEAT	2
14	10054454	爪勾	CLAW HOOK	2
15	10003248	3挡圈	E-RING 3	8
16	10000413	短销 5×15.5	SHORT PIN	4
17	10062683	模板导轨	ALUMINUM PROFILE GUIDE	1

# 9. X-Y送料部件(2)



序号 NO.	件号 Part No.	名称	DESCRIPTION	数量 Qty
1	10003107	螺钉	SCREW M4 L=16	4
2	10002991	4垫圈	WASHER 4	16
3	10002954	4垫圈	WASHER 4	20
4	10003164	螺钉	SCREW M6 L=16	4
5	10005537	5弹簧垫圈	WASHER 5	4
6	10012318	5垫圈	WASHER 5	4
7	10061930	X向低压闭环步进电机	STEPPING MOTOR	1
8	10000175	X向电机直齿轮	SPUR GEAR	1
9	10011232	螺钉	SCREW M6 L=6	4
10	20024320	电机座喷漆	MOTOR BASE	1
11	10000551	X向传动直齿轮		1
12	10003601	6000ZZNR轴承	BEARING	2
13	10062709	齿轮轴	PIN	1
14	10004949	螺钉	SCREW M5 L=8	4
15	10062711	左带轮	R-SYNCHRONOS PULLEY	1
16	10000984	螺钉	SCREW M3 L=9.5	1
17	10061948	X向传感器	X DIRECTION SENSOR	1
18	10062713	左侧板	COVER PLATE	1
19	10001513	螺钉	SCREW M3 L=6	4
20	10062712	限位块	LIMIT BLOCK	2
21	10009667	螺钉	SCREW M3 L=6	8
22	10000863	螺钉	SCREW M4 L=12	15
23	10062838	直线导轨 2	LINEAR GUIDE RAIL 2	1
24	10050626	X向同步带压板	PRESS PLATE	2
25	10048800	螺钉	SCREW M4 L=10	8
26	10062734	模板导轨座	SUPPORT SEAT	1
27	10062735	送料座	FEED SEAT	1
28	10003399	螺钉	SCREW M4 L=8	4
29	10003071	3垫圈	WASHER 3	4
30	10003082	3垫圈	WASHER 3	4
31	10003874	螺钉	SCREW M3 L=14	4
32	10035069	螺钉	SCREW M5 L=28	3
33	10062684	侧挡板	TIGHTEN PLATE	1
34	10062733	张紧板	MOUNTING PLATE	1
35	10062686	X向开口同步带	SYNCHRO BELT	3700
36	10062731	带轮轴	PIN	1
37	10062732	右带轮	L-SYNCHRONOS PULLEY	1
38	10060013	挡板	BAFFLE	2
39	10059560	塑料拖链	PLASTIC DRAG CHAIN	1
40	10001239	螺钉	SCREW M4 L=8	4
41	10061094	800同步带款拖链安装板	MOUNTING PLATE	1
42	10003875	螺钉组件	SCREW M4 L=8	6
43	10063892	坦克链15*30	PLASTIC DRAG CHAIN	1300
44	10040655	螺钉	SCREW M4 L=5.5	4
45	10012553	螺钉	SCREW M4 L=8	2
46	10060009	拖链过渡板	MOUNTING PLATE	1
47	10062685	垫圈 10	WASHER 10	3
48	10003281	挡圈 9	E-RING 9	1
49	10003576	6000ZZ轴承	BEARING	2
50	10062730	限位套	BUSHING	1
51	10005078	挡圈 4	E-RING 4	1
52	10062767	销	SPRING PIN	1

# 10. X-Y送料部件(3)

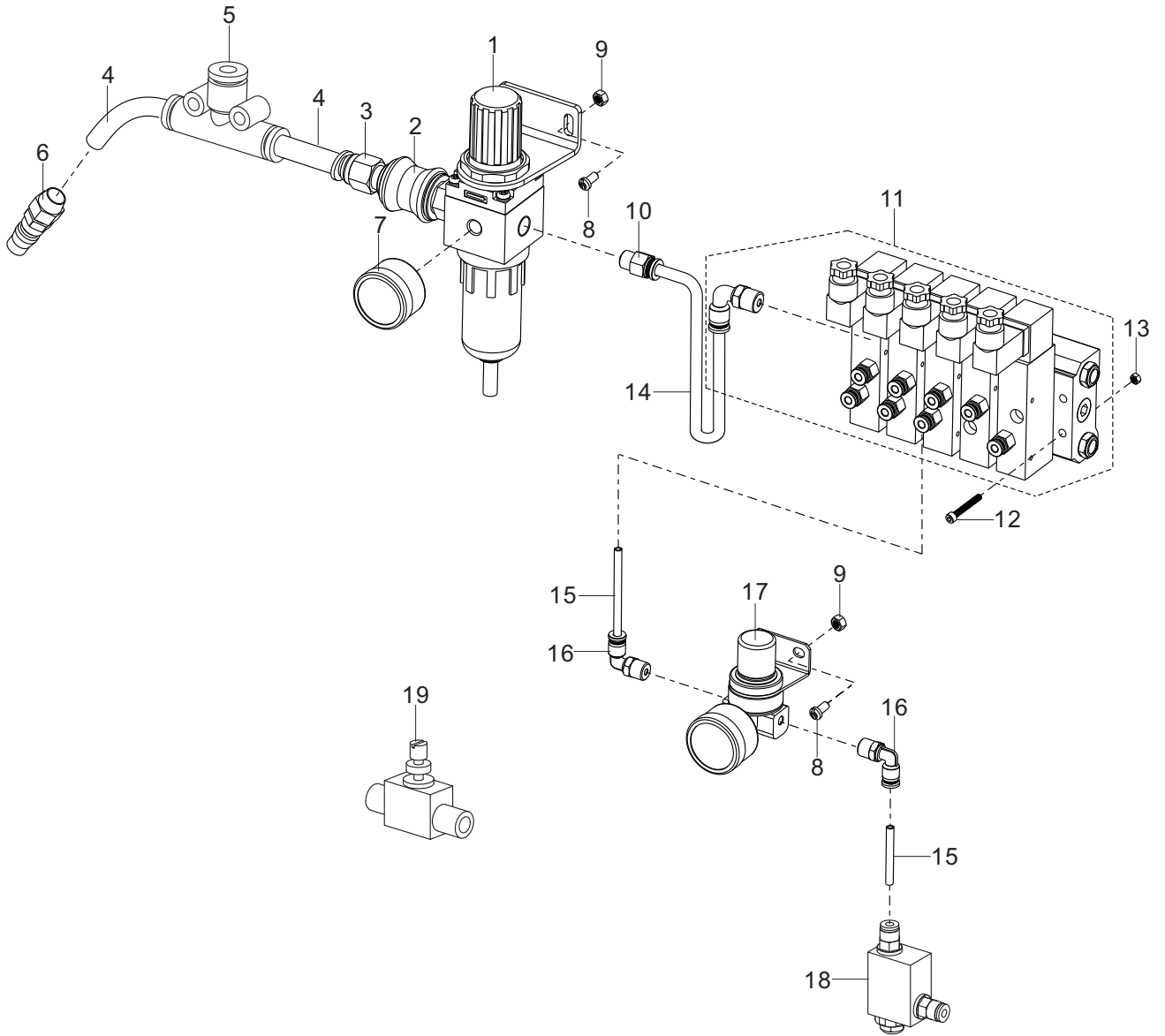


序号 NO.	件号 Part No.	名称	DESCRIPTION	数量 Qty
1	10006118	螺钉 M5 L=25	SCREW M5 L=25	4
2	10012318	5垫圈	WASHER 5	4
3	10005537	5垫圈(GB/T93-1987)	WASHER 5	4
4	10061931	X向低压闭环步进电机	STEPPING MOTOR	1
5	10005109	14调整垫片	WASHER 14	3
6	10003684	51101轴承	BEARING	1
7	10053328	Y向主动齿轮	Y-DRIVE GEAR	1
8	10011232	螺钉 M6 L=6	SCREW M6 L=6	4
9	10003585	6302ZZNR轴承	BEARING	2
10	10053998	900Y向同步带轮	Y-SYNCHRONOUS PULLEY	2
11	10004949	螺钉 M5 L=8	SCREW M5 L=8	4
12	10009787	6202ZZNR轴承	BEARING	2
13	10057437	Y向带轮轴	WHEEL SHAFT	1
14	10050756	Y向从动齿轮	DRIVEN GEAR	2
15	10003141	螺钉 M5 L=20	SCREW M5 L=20	24
16	10062839	直线导轨3	LINEAR GUIDE RAIL 3	2
17	10010958	螺钉 M5 L=14	SCREW M5 L=14	16
18	10005537	5垫圈(GB/T93-1987)	WASHER 5	16
19	10009469	5垫圈	WASHER 5	16
20	10054001	900Y向同步带座	MOUNTING SEAT	2
21	10000984	螺钉	SCREW	1
22	10061949	Y传感器连接线揽	Y SENSOR	1
23	10058286	Y向传感器安装板	SENSOR MOUNTING PLATE	1
24	10003875	螺钉 M4 L=10	SCREW M4 L=10	2
25	10052226	导轨限位块	LIMIT BLOCK	2
26	10003162	螺钉 M5 L=12	SCREW M5 L=12	4
27	10054002	900Y向同步带压板	PRESS PLATE	2
28	10003164	M5×6 螺钉	SCREW M5 L=16	16
29	10005537	5垫圈(GB/T93-1987)	WASHER 5	16
30	10012318	5垫圈	WASHER 5	16
31	10062687	支撑座右	SUPPORT SEAT	1
32	10058215	送料座	FEED SEAT	2
33	10003875	螺钉	SCREW M4 L=8	1
34	10002954	4垫圈	WASHER 4	1
35	10058216	Y向原点感应片	DETECTION PLATE	1
36	10003576	6000ZZ轴承	BEARING	4
37	10050883	张紧板	TENSIONING PLATE	4
38	10012162	螺钉 M5 L=5	SCREW M5 L=5	12
39	10053997	900张紧轴	TENSIONING SHAFT	4
40	10054000	900张紧轴2	TENSIONING SHAFT 2	2
41	10003100	螺钉	SCREW M5 L=35	2
42	10000480	6垫圈	WASHER 6	2
43	10009467	螺母 M5	NUT M5	2
44	10054003	900Y向同步带从动轮	Y-DRIVEN GEAR	2
45	10054063	900开口橡胶同步带	SYNCHRONOUS BELT	5,020
46	10053999	900张紧座	TENSIONING PLATE	2
47	10003141	螺钉 M5 L=20	SCREW M5 L=20	6

序号 NO.	件号 Part No.	名称	DESCRIPTION	数量 Qty
48	10062688	支撑座左	SUPPORT SEAT	1
49	10012318	5垫圈	WASHER 5	16
50	10010958	螺钉 M5 L=14	SCREW M5 L=14	16
51	10002839	销	SPRING PIN	2
52	10005477	15输送主轴挡圈	THRUST COLLAR 15	5
53	10010958	螺钉 M6×0.75 L=5	SCREW M6×0.75L= 5	10
54	10010090	挡圈	THRUST COLLAR	1



# 11. 气动部件

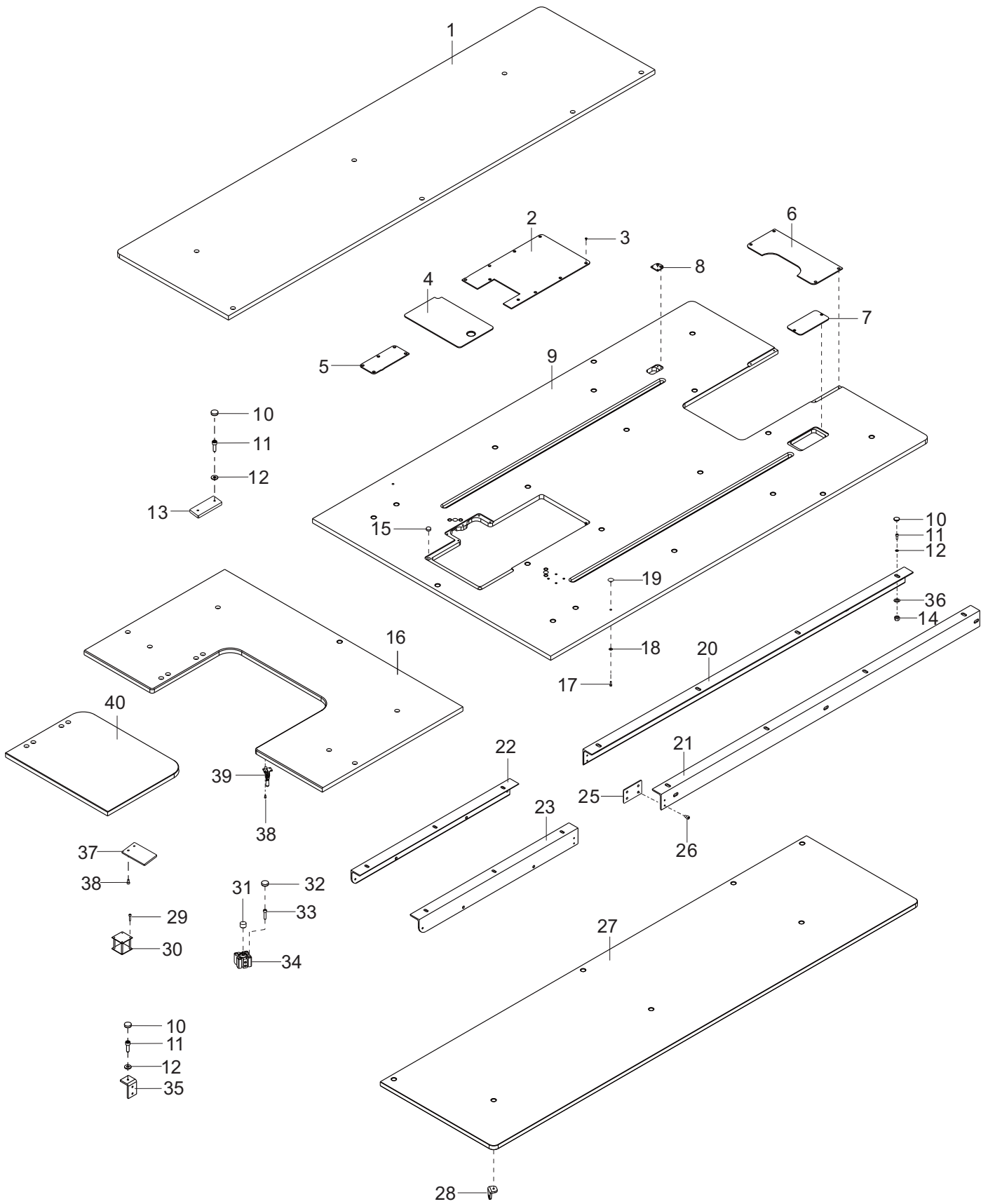


气动部件

PNEUMATIC COMPONENTS

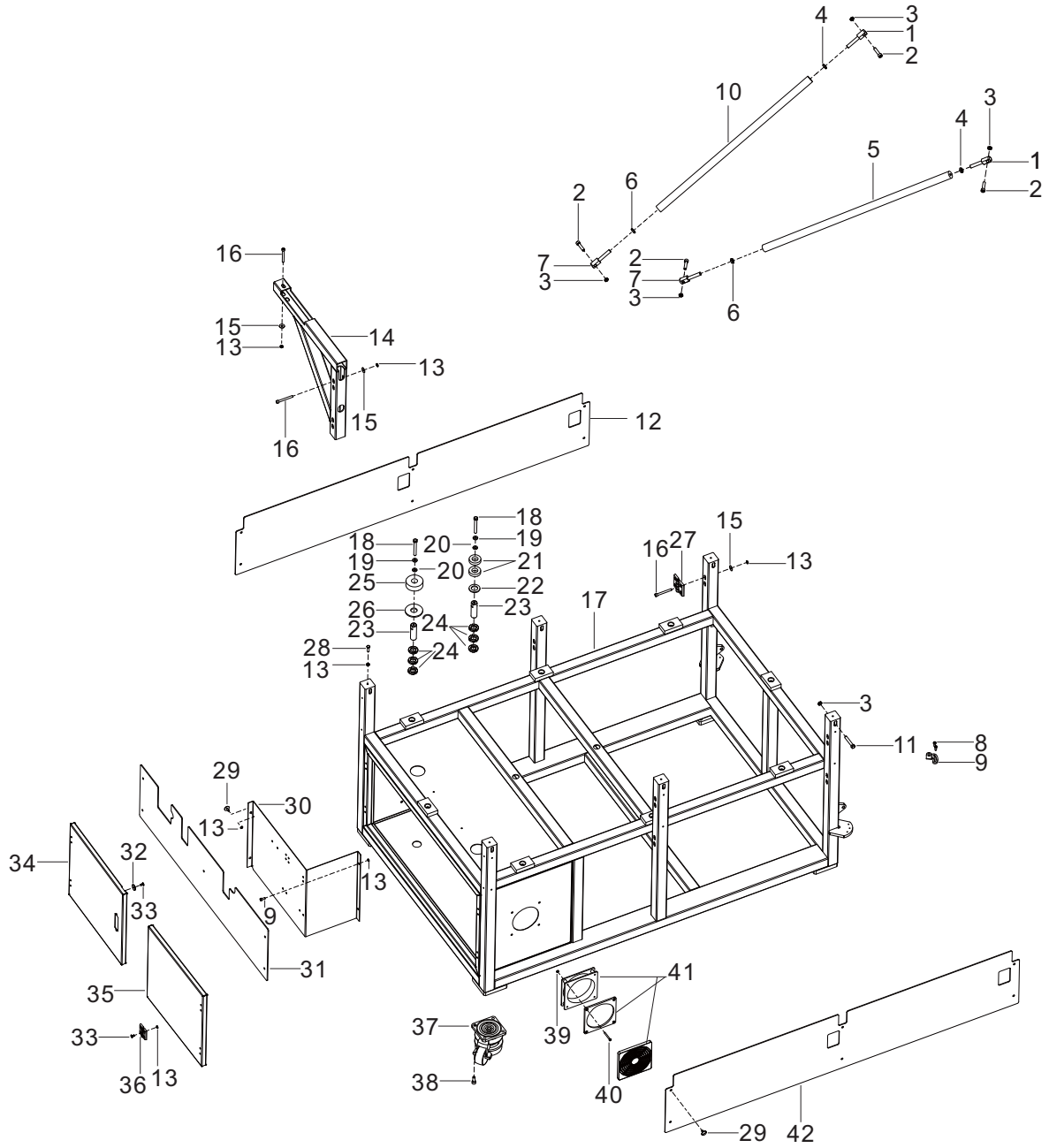
序号 NO.	件号 Part No.	名称	DESCRIPTION	数量 Qty
1	10061784	过滤减压阀组件	FILTER REGULATOR	1
2	10007534	ATC HSV08手滑阀	HAND SLIDE VALVE	1
3	10003458	APC10-02 Φ10阀进气直通接头	PLUG APC10-02	1
4	10008151	ATC PUC1065透明气管	TUBE Φ10×Φ6.5	
5	10052376	三通快速管接头		1
6	10024399	接头	PLUG Φ10×R1/4	1
7	10007620	带压力开关的压力表	AIR PRESSURE SWITCH	1
8	10003883	面板螺钉	SCREW	4
9	10009467	螺母 M5	NUT M5	4
10	10031295	接头	HALF UNION APC6-02	1
11	10050465	五电磁阀组件	5 PORT SOLENOID VALVE GROUP	1
12	10002180	螺钉 M4 L=30	SCREW M4 L=30	4
13	10009471	螺母 M4	NUT M4	4
14	10008150	气管	TUBE Φ6×Φ4	
15	10008119	气管	TUBE Φ4×Φ2.5	
16	10053405	接头	PLUG PL4-01	4
17	10052370	AR1500压脚压力调节阀	REDUCING VALVE	2
18	10059769	快排阀	VALVE	1
19	10052369	调压阀NSF 04	PLUG NSF 04	1

## 12.大缝台部件



序号 NO.	件号 Part No.	名称	DESCRIPTION	数量 Qty
1	10057259	900辅助台板左	900 LEFT TABLE	1
2	10057343	900剪线上盖板	900 COVER LABLE	1
3	10051846	螺钉	SCREW	22
4	10055065	梭芯盖板组件	COVER LABLE	1
5	10056918	800切刀盖板	800-COVER LABLE	1
6	10058136	900后台板贴	900 TABLE LABLE	1
7	10055066	电机盖板	COVER LABLE	1
8	10058223	拖链安装板2	DRAG CHAIN PLATE	1
9	10061330	台板面	TABLE	1
10	10056183	橡胶塞	RUBBER PLUG	51
11	10009008	M6×16 螺钉	SCREW M6 L=16	49
12	10012856	6.5×12×1垫圈	WASHER 6.5×12×1	56
13	10063748	辅助台板支撑安装板	CONNECTING PLATE	5
14	10003032	M6螺母	NUT M6	12
15	10001096	磁铁	MAGNET	4
16	10061331	小台板面	SMALL TABLE	1
17	10001033	M3×10 螺钉	SCREW	2
18	10041012	大垫圈3 (GB/T 96.2-2002)	WASGER	2
19	10055663	顶销	APEX PIN	2
20	10058161	APS-L4060 900直角角铝后A	AFTER ALUMINIUM PROFILE A	1
21	10058162	APS-L4060 900直角角铝后B	AFTER ALUMINIUM PROFILE B	1
22	10058159	APS-L4060 900直角角铝前A	FRONT ALUMINIUM PROFILE A	1
23	10058160	APS-L4060 900直角角铝前B	FRONT ALUMINIUM PROFILE B	1
24	10054095	螺钉销2	SHOULDER SCREW	2
25	10063747	连接板	CONNECTING BOLCK	2
26	10003162	M5×12 螺钉	SCREW M5 L=12	4
27	10057260	900辅助台板右	900 RIGHT TABLE	1
28	10055075	台板安装板	MOUNTING PLATE	8
29	10000909	M3×8 螺钉	SCREW	4
30	10061934	RFID扫码识别器	RFID CODE RECOGNIZER	1
31	10059444	模板顶柱	TOP COLUMN	2
32	10061304	橡胶塞	RUBBER PLUG	4
33	10003141	螺钉M5×20 (GB/T 70.1-2000)	SCREW	4
34	10059341	气缸	AIR CYLINDER	2
35	10055075	台板安装板	MOUNTING PLATE	8
36	10000480	垫圈 6×5×1.6	WASHER 6×5×.6	12
37	10057308	翻转台板限位块	LIMIT BLOCK	1
38	10059297	自攻螺钉M4×10	SCREW M4 L=10	10
39	10056112	肘夹头	ELBOW CHUCK	2
40	10057276	翻转小台板	FLIP PLATE	1

# 13.机架部件

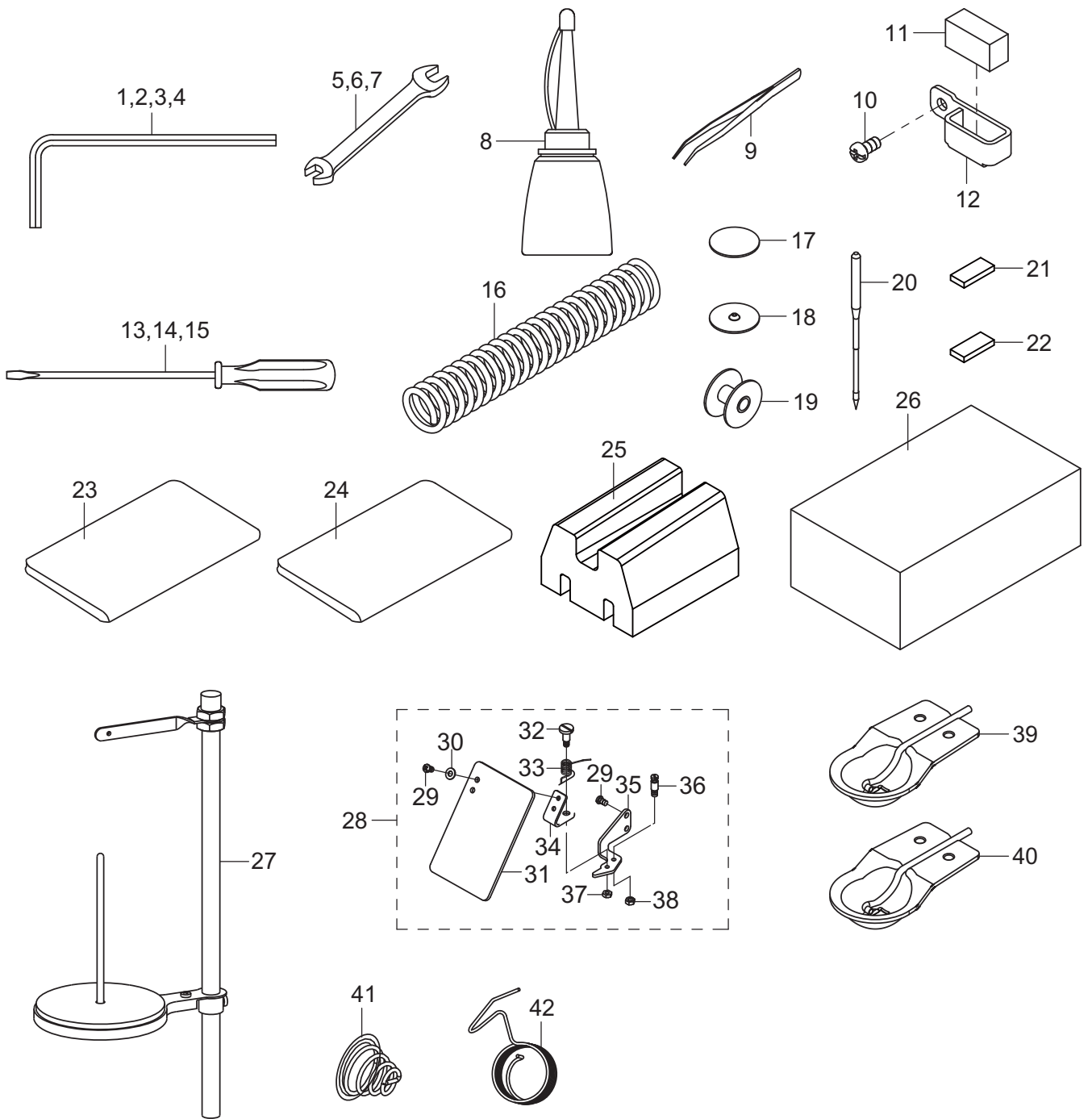


## 机架部件

## MACHINE FRAME COMPONENTS

序号 NO.	件号 Part No.	名称	DESCRIPTION	数量 Qty
1	10054069	接头A	JOINT A	4
2	10006283	M8×35 螺钉	SCREW M8 L=35	8
3	10003131	M8螺母	NUT M8	14
4	10054091	M10螺母	NUT M10	4
5	20022512	900支撑杆B喷漆件	900-SUPPORT ROD B	2
6	10054090	M10螺母 左旋	NUT M10-L	4
7	10054070	接头B	JOINT B	4
8	10003162	M5×12 螺钉	SCREW M5 L=12	6
9	10055085	支撑板1	SUPPORT BAR 1	2
10	20022513	900支撑杆A喷漆件	900-SUPPORT ROD A	2
11	10054084	M8×50螺栓	SCREW M8 L=50	6
12	10055090	右侧挡板	RIGHT BAFFLE	1
13	10003032	M6螺母	NUT M6	42
14	20021221	900辅助台板支撑架组件喷漆件	900-AUXILIARY PLATEN SUPPORT ASSEMBLY	4
15	10003019	6垫圈	WASHER 6	36
16	10003790	M6×5 螺钉	SCREW M6 L=55	36
17	10063565	900通用机架体	900-MACHINE FRAME	1
18	10059271	M8×65 螺栓	SCREW M8 L=65	7
19	10054005	橡胶垫B	RUBBER PLATE B	7
20	10002948	8垫圈	WASHES 8	8
21	10054004	橡胶垫A	RUBBER PLATE A	6
22	10054852	Φ20平垫圈	WASHER Φ20	3
23	10054074	M20×1.5 螺柱	SCREW M20	8
24	10054086	小圆螺母	RUBBER PLATE A	24
25	10057527	橡胶垫A	RUBBER PLATE A	5
26	10055382	Φ20平垫圈	WASHER Φ20	5
27	10055094	金属合页	METAL HINGE	8
28	10052876	M6×20 螺栓	SCREW M6 L=20	6
29	10041876	螺钉	SCREW	19
30	10055525	隔板	PARTITION	1
31	10054006	后挡板	BACK BAFFLE	1
32		磁铁	MAGNET	2
33	10030193	M5×10 螺钉	SCREW M5 L=10	18
34	10055522	电控箱左侧门	ELECTRIC CONTROL BOX LEFT DOOR	1
35	10055523	电控箱右侧门	ELECTRIC CONTROL BOX ON THE RIGHT DOOR	1
36	10059338	金属合页	METAL HINGE	4
37	10057044	一体式脚轮	INTEGRAL ANGLE WHEEL	4
38	10003093	M8×20 螺钉	SCREW M8 L=20	16
39	10009471	M4螺母	NUT M4	4
40	10007044	M4×40 螺钉	SCREW M4 L=40	4
41	10054081	散热风扇12025	COOLING FAN	1
42	10055089	左侧挡板	LEFT BAFFLE	1

# 14. 附件部件

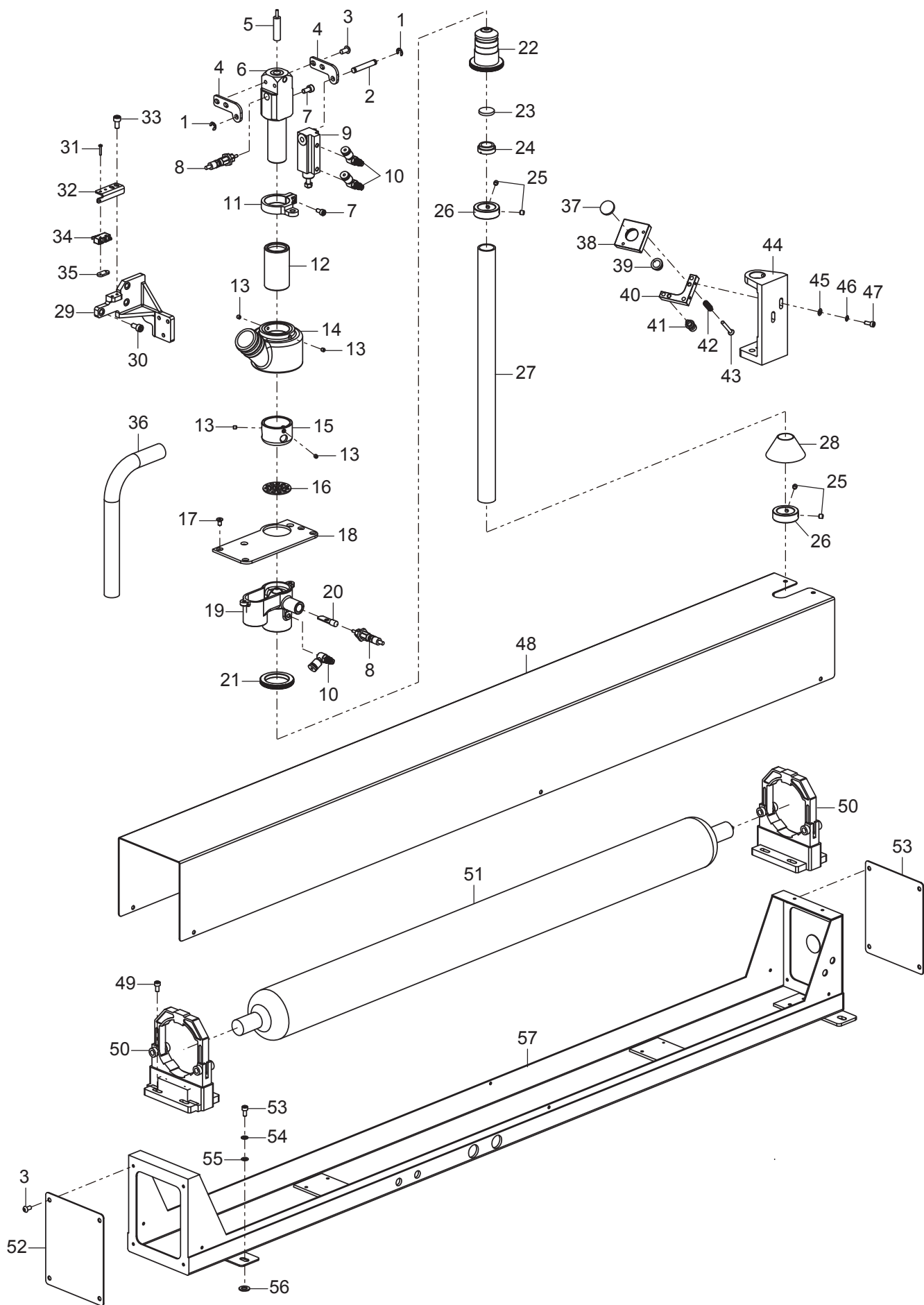


序号 NO.	件号 Part No.	名称	DESCRIPTION	数量 Qty
1	10009685	内六角扳手 2.5	HEXAGONAL WRENCH 2.5	1
2	10009687	内六角扳手 3	HEXAGONAL WRENCH 3	1
3	10009689	内六角扳手 4	HEXAGONAL WRENCH 4	1
4	10009689	内六角扳手 5	HEXAGONAL WRENCH 5	1
5	10003369	呆扳手 8×0	WRENCH 8×0	1
6	10003368	呆扳手 9×1	WRENCH 9×1	1
7	10003368	呆扳手 9×1	WRENCH 9×1	1
8	10005356	油壶	OLI CAN	1
9	10004247	镊子组件	TWEEZERS	1
10	10011143	螺钉 SM9/64"×40 L=7	SCREW SM9/64"×40 L=7	1
11	10000396	硅油毡	FELT	1
12	10000398	硅油板	THREAD GUIDE	1
13	10010994	大螺丝刀	SCREW DRIVER LARGE	1
14	10010995	中螺丝刀	SCREW DRIVER MIDDLE	1
15	10013185	小螺丝刀	SCREW DRIVER SMALL	1
16	60000115	吹气管	INPUT TUBE	1
17	10060484	38IC卡		20
18	10041780	运模车小针板 <用于-01>	SMALL NEEDLE PLATE	1
19	10063086	梭心 <用于-02>	BOBBIN	2
19	10039875	梭心	BOBBIN	2
20	10053820	机针 DP×6 1 0#	NEEDLE DP×6 1 0#	10
21	10040794	U盘		1
22	10047881	PDS打板软件及加密狗		1
23	10041948	750运模车机头罩	MACHINE HEAD COVER	1
24	10051094	750防雨罩		1
25	10041496	机头发泡		1
26	10000159	附件箱	ACCESSORY BOX	1
27	10057269	单线架组件	THREAD STAND	1
28	20004358	眼睛防护罩组件	SAFETY PLATE ASM	1
29	10011570	螺钉 SM11/64"×40 L=7	SCREW SM11/64"×40 L=7	(4)
30	10011680	垫圈 4.6×9.7×0.8	WASHER 4.6×9.7×0.8	(2)
31	10011636	安全板	SAFETY PLATE	(1)
32	10011677	螺钉轴	HINGE SCREW	(1)
33	10011678	弹簧	SPRING	(1)
34	10011684	安全板架组件	SAFETY PLATE INSTALLING PLATE B	(1)
35	10011632	安全板座	SAFETY PLATE INSTALLING PLATE A	(1)
36	10011633	销钉	SCREW PIN	(1)
37	10010370	螺母 SM11/64"×40	NUT SM11/64"×40	(1)
38	10011682	螺母 SM3/16"×28	NUT SM3/16"×28	(1)
39	10055183	小辅助压脚组件	AUXILIARY PRESSER FOOT	1
40	10057340	加高辅助压脚组件	AUXILIARY PRESSER FOOT	1
41	10004176	弹簧	SPRING	1
42	10039203	挑线簧	SPRING	1

-01小旋梭 -02大旋梭



# 15. 激光部件 (1)

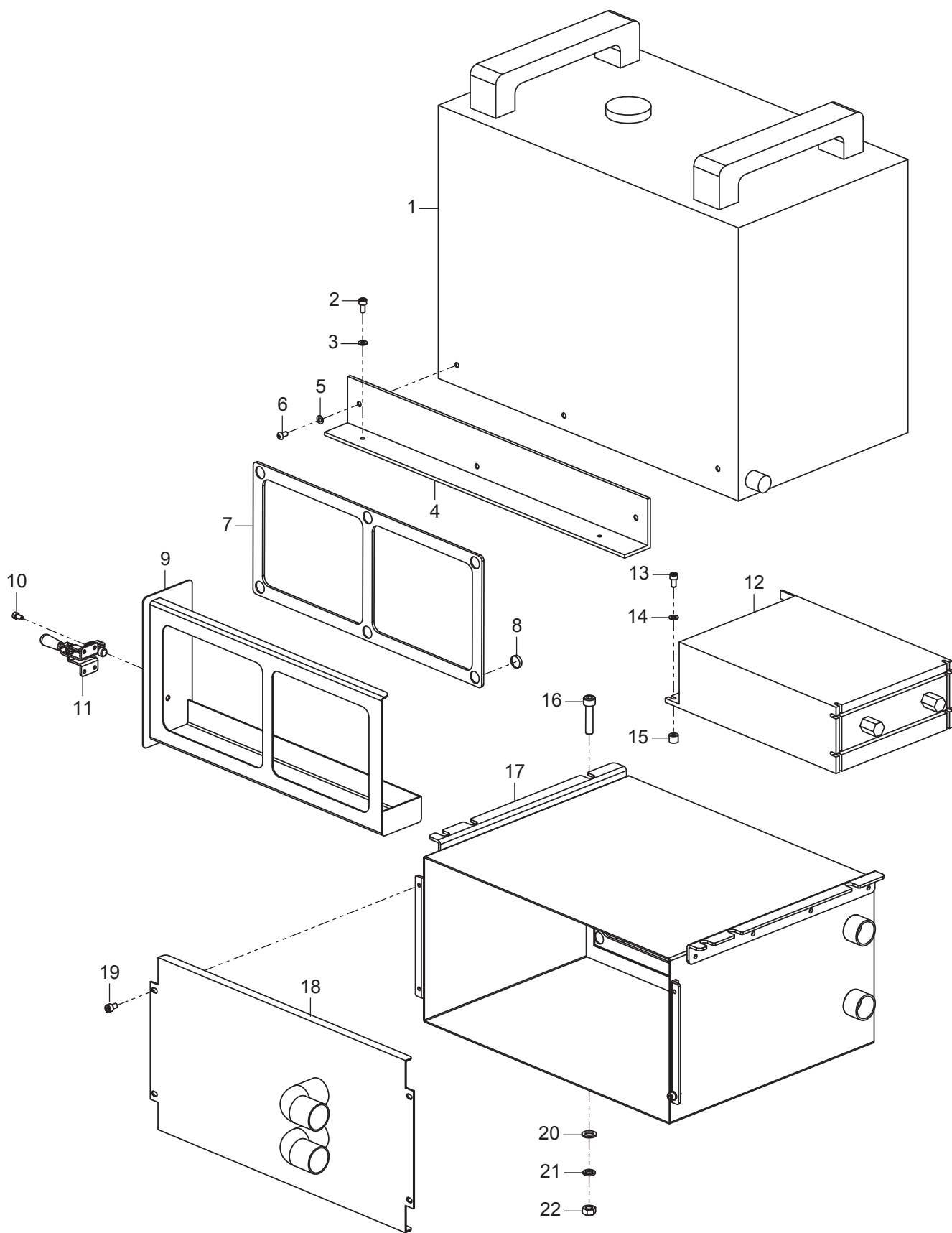


## 激光部件 (1)

## WIPER MECHANISM COMPONENTS

序号 No.	件号 Part No.	名称	DESCRIPTION	数量 Qty
1	10003289	挡圈 12	RING 12	2
2	10058755	气缸固定销	PIN	1
3	10007096	螺钉 M5 L=10	SCREW M5 L=10	20
4	10058754	气缸固定板		2
5	10058759	激光灯		1
6	10058751	压料导向座		1
7	10003399	螺钉 M4 L=8	SCREW M4 L=8	4
8	10058870	针型气缸组件		2
9	10001263	气缸组件	AIR CYLINDER	1
10	10052378	气管接头	JOINT	3
11	10058756	连接环		1
12	10058752	压料导向套		1
13	10001514	螺钉 M4 L=4	SCREW M4 L=4	4
14	10061438	侧吸风罩		1
15	10058753	压料座		1
16	10058749	下吸气蜂窝板		1
17	10051846	螺钉 M4 L=8	SCREW M4 L=8	6
18	10061210	激光切刀盖板		1
19	10061432	下吸气座		1
20	10058746	下防尘盖组件		1
21	10058743	聚光镜锁紧螺母		1
22	10059299	聚光镜安装座		1
23	10059420	聚光镜		1
24	10058744	聚光镜固定螺母		1
25	10012162	螺钉 M5 L=5	SCREW M5 L=5	4
26	10059552	激光保护管固定挡圈		2
27	10059424	激光保护管		1
28	10059789	塔型防尘套		1
29	20021975	吸气压料组件固定座		1
30	10007096	螺钉 M5 L=10	SCREW M5 L=10	3
31	10003052	螺钉 M2 L=12	SCREW M2 L=12	2
32	10059414	激光安全开关固定板		1
33	10003875	螺钉 M4 L=8	SCREW M4 L=8	2
34	10059419	激光安全开关		1
35	10005877	螺母		1
36	10061357	波纹管		4
37	10059421	反光镜		1
38	10059416	激光反光镜安装板		1
39	10059417	激光反光镜盖		1
40	10059418	反光镜调节座		1
41	10059423	反光镜调节铜螺钉		3
42	10059422	反光镜调节弹簧		2
43	10003416	螺钉 M4 L=30	SCREW M4 L=30	2
44	10059415	激光反光镜安装座		1
45	10002954	垫圈 4	WASHER 4	2
46	10002991	弹簧垫圈 4	SPRING WASHER 4	2
47	10005041	螺钉 M4 L=10	SCREW M4 L=10	2
48	10058867	激光管罩壳盖		1
49	10003098	螺钉 M5 L=6	SCREW M5 L=6	8
50	10058826	激光管固定座		2
51	10058816	激光管		1
52	10059431	Z-91-382648-07\激光罩壳端盖		2
53	10003141	螺钉 M5 L=20	SCREW M5 L=20	4
54	10005537	弹簧垫圈	SPRING WASHER 5	4
55	10010954	垫圈 5.2×15×2	WASHER 5.2x15x28.2	4
56	10013008	橡胶垫圈 8.2	WASHER 8.2	4
57	10058866	激光管罩壳		1
58				
59				
60				

# 16. 激光部件 (2)



## 激光部件 (2)

## WIPER MECHANISM COMPONENTS

序号 No.	件号 Part No.	名称	DESCRIPTION	数量 Qty
1	10058818	水冷机		1
2	10003093	螺钉 M8 L=20	SCREW M8 L=20	2
3	10002986	垫圈 8	WASHER 8	2
4	10059413	水箱安装角铁		1
5	10012318	垫圈 5	WASHER 5	3
6	10003141	螺钉 M5 L=20	SCREW M5 L=20	3
7	20023543	过滤毡压板		1
8	10001096	磁铁		6
9	10061228	过滤毡固定架		1
10	10056112	肘夹头		1
11	10001239	螺钉 M4 L=8	SCREW M4 L=8	4
12	10058817	激光管电源		1
13	10009103	螺钉 M4 L=16	SCREW M4 L=16	4
14	10002954	垫圈 4	WASHER 4	4
15	10024992	转接板支柱		4
16	10006283	螺钉 M8 L=35	SCREW M8 L=35	4
17	10061226	过滤器箱		1
18	10062075	烟雾过滤装置罩壳前盖_大风量		1
19	10003101	螺钉 M5 L=8	SCREW M5 L=8	4
20	10002948	垫圈 8	WASHER 8	4
21	10002986	弹簧垫圈 8	SPRING WASHER 8	4
22	10003131	螺母 M8	NUT M8	4
23				
24				
25				
26				
27				
28				
29				
30				